

# WOODFOLD INSTALLATION INSTRUCTIONS: SERIES 3300



Read and understand these instructions before proceeding.  
It saves frustration!

Examine the installation site before proceeding. Beginning installation before checking things out is discouraged.  
**Measure Twice - Cut Once** so to speak

## 1 Preparation

### Preliminary Examination

Confirm the match of the packaged door to the intended opening. The sample label to the right shows the location of the critical information.



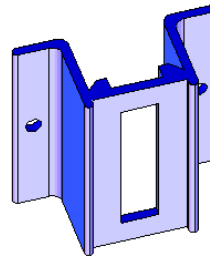
Inspect the packaging. If the package was damaged when it arrived, contact the shipping carrier first, then notify Woodfold.

Lay out the contents on a flat surface near the opening where the door is to be installed.

The package(s) contents should include

- ✓ Door(s)
- ✓ Track Section(s)
- ✓ Wood Sweepstrip Moldings
- ✓ Interlocking Jamb Molding (See box at right)
- ✓ 2 1/8 x 1 1/4 Mounting Post (if post mount)
- ✓ Hardware packet (screws, spring pins if multiple sections of track)
- ✓ These instructions (Yes, yes, we know you had to find them if you're reading them, but we like to be complete.)
- ✓ A copy of the shipping label with all the information you need if you have to call Woodfold for any reason. Hold on to it for future reference.

### And NOW, a short word about Interlocking Jamb Molding



The Interlocking Jamb Molding is the extruded aluminum piece onto which the door latches. If your door slides from each end to meet in the middle, your Interlocking Jamb Molding is already installed on a lead post of the door and you may disregard that section of the Instructions on page 4. Configurations where the door closes to a wall or doorjamb will have the piece in the box with a cross section like shown on the left. It will fit from the track to the floor



**Power Screw Drivers:** Check the length of your #2 Phillips Bit. It needs to extend at least 1 1/4" past the chuck. Any shorter and the chuck may tear up the track or the screw won't seat. It falls into the frustrating category when you have to ask Woodfold for a new track.



**Caution!** The factory greased the track for smooth operation! Hands and tools can spread the grease all over, so please be careful.

Dry fit the track in the opening. The correct length will just fit into the opening. If needed, trim the track with a hacksaw. Try to keep the metal filings from mixing with grease inside the track.

If the track is too short by more than 1/2" contact Woodfold for a replacement track.





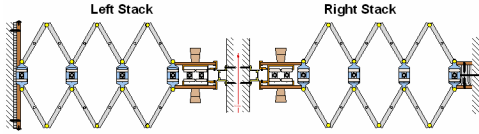
The next few steps are much easier if you have assistance.

## 2 Track Installation

There are different installation techniques for single section or multi section tracks. If you have multi section track, jump to ***If the track is in two or more pieces*** section below.

### ***If the track is in one piece***

Thread the track onto wheels; lineup the wheels properly in the track grooves. Be careful not to insert the wheels sideways. You won't like the result.



Confirm the correct orientation of the door. See the illustrations of Left or Right Stack doors to the left or Double Ended doors on the next page. Position the track to ensure: a) it can be securely attached to the header and b) the Mounting Panel can be securely attached to the wall or doorjamb.



ack Scr

Stack the door to one end of the track (either side of the opening is OK) and attach the other end of the track to the header. Use #8x1 1/2" pan head screws through the first 2 sets of holes at the end of the track. Seat the head of the screws firmly against the track.



**Caution! Firmly attach the track to the structural header! Sheetrock and many decorative materials do not provide adequate support.**

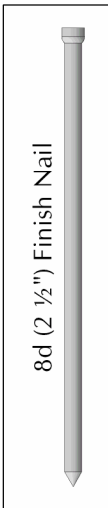
If the screws didn't go into a solid part of the header (soft stuff like sheet rock or acoustical tile doesn't count) at least 3/4", now would be a good time to go to the hardware store and get longer #8 Pan Head or Truss Head screws.

Transfer the door to the attached end of the track. Finish attaching the track with #8x1 1/2" Pan



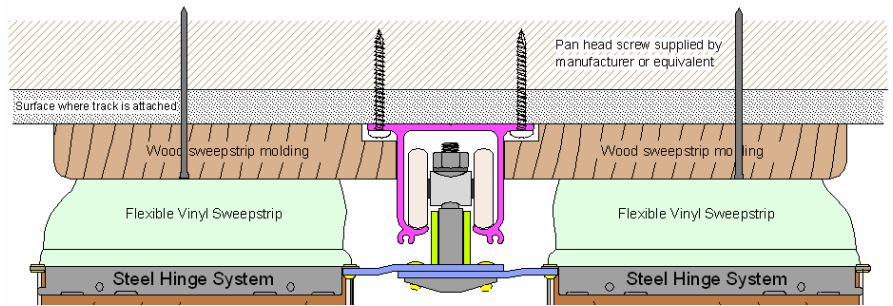
**Check it out!** Move the door back and forth along the track looking for smooth operation. Most frequent problems include screw heads sticking out, wheels sideways or debris in the track.

Head screws.



8d (2 1/2") Finish Nail

Use the 8d (2 1/2") finishing nails, approximately 1 per foot, to attach the wood Sweepstrip Moldings tightly against each side of the track.



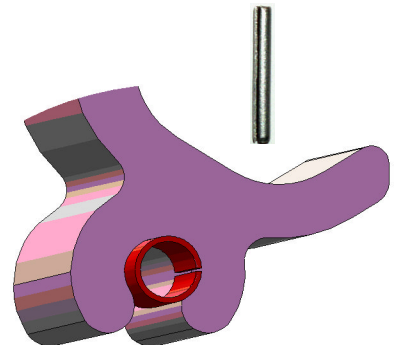
### ***If the track is in two or more pieces***

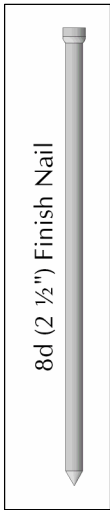
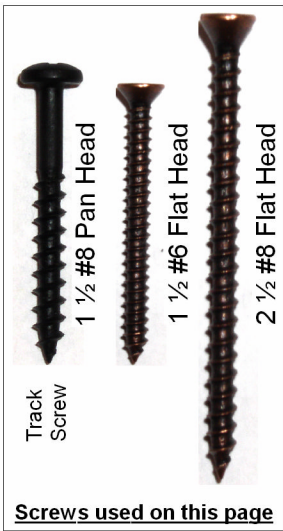
Find the longest piece of track. If they are all the same size, just pick one, any one.

Insert the alignment pins into the groove of the track at the end that will mate to the next section. The pin split MUST BE AWAY (about 90°) from the slot in the track. Drive the spring pins completely into one track using a hammer.

Use 1 1/2" #8 Pan head screws to attach the track to the header. Start at the jamb side where the door will stack and put in enough screws to accommodate the stacked door. Seat the head of the screws firmly against the track.

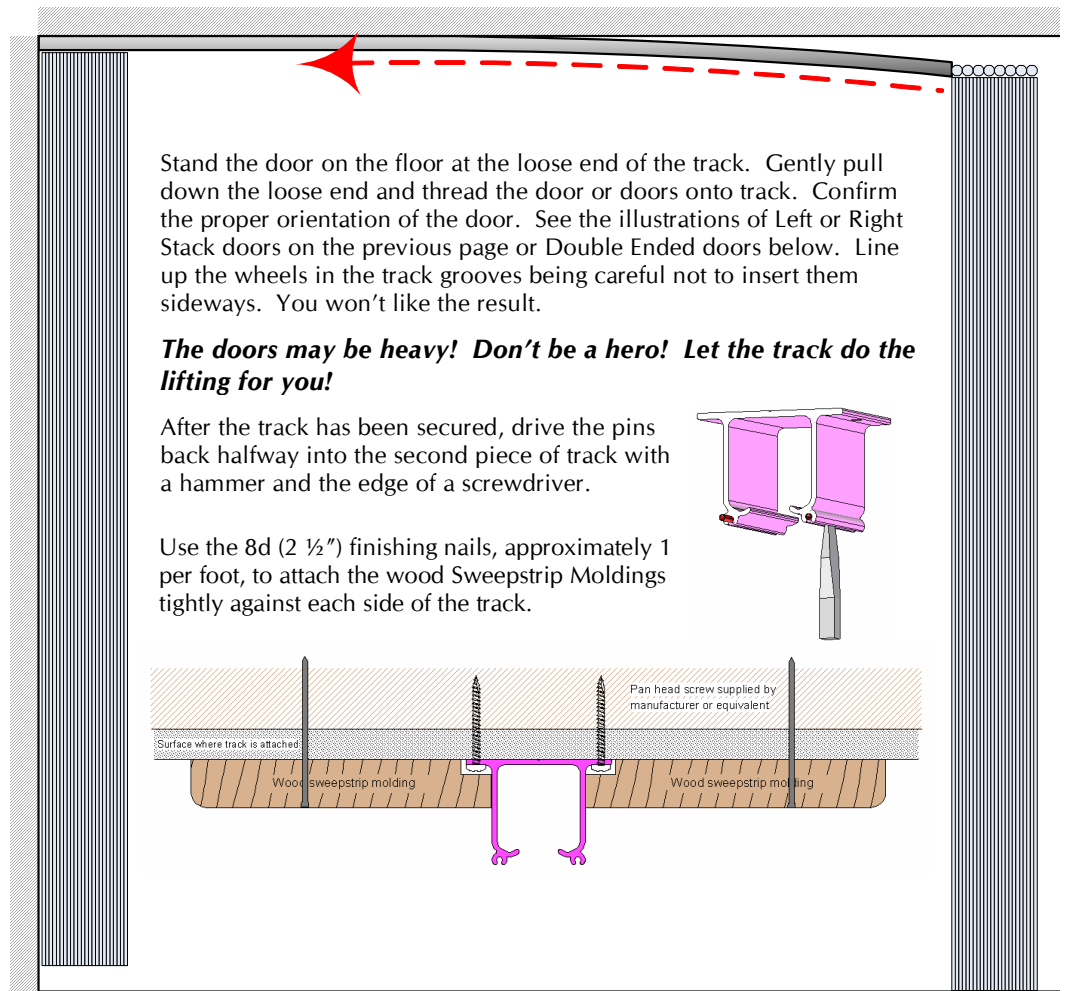
If the screws didn't go into a solid part of the header (soft stuff like sheet rock or acoustical tile doesn't count) at least 3/4", now would be a good time to go to the hardware store and get longer #8 Pan Head or Truss Head screws.



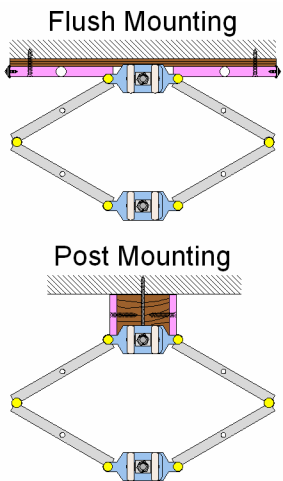


**This next section is the most critical. Improperly installing the Mounting Panel results in the majority of trouble calls to Woodfold.**

**Repeat after me: I will read this section. I will read this section.**



### 3. Mounting Panel



If your door has a mounting panel like one of those to the left, you need to read this Section.

If your door looks like the picture to the right, it is a double-ended door and you may skip ahead to Section 4.

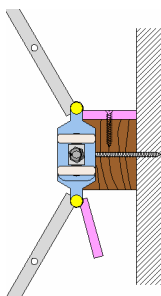
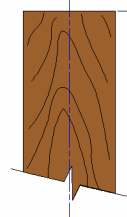
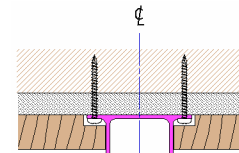
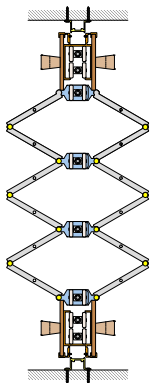
#### Post Mounting

Find the 2 1/8 x 1 1/4 post in the shipping package. Attach it to the mounting surface 1" below the track and centered on the track. Use the provided 2 1/2" #8 flat head screws through the predrilled holes in the post. Ensure the post is plumb!

Push the door over the post. The post will snugly fit between the mounting panel flaps and with 1"-2" clearance between the hinge hardware.

Screw the mounting panel flaps to the post using the provided 1 1/2 #6 flat head screws. Place a screw about 6" from the top and bottom of the post and 2 additional screws equal distances between the first 2 screws. Repeat anchoring the 2nd flap being sure to slightly offset the screws so they won't meet in the middle of the post.

#### Double Ended



## **Flush Mounting**

The door mounting panel pre attached to a sheet of plywood. **Do Not Remove** the plywood.

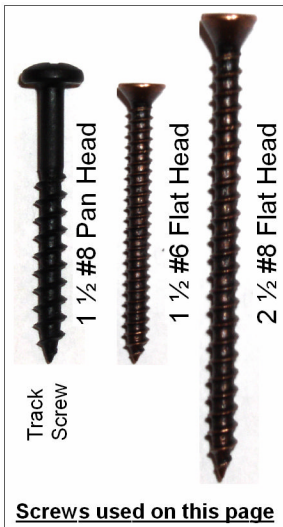
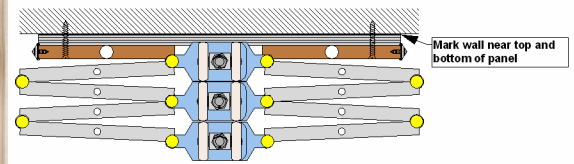
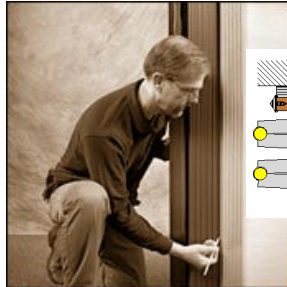
Push the door to the side that will be fastened permanently to the wall. Let the door form its own plumb (hang free) and carefully mark the wall with a pencil at the edge of the mounting panel/plywood near the top and bottom of the door.



**It is important! Make the marks while the door is in its stacked position or the door will not close properly.**

OK! Here comes the critical step. You just marked the wall at the top and bottom of the mounting panel edge with the door stacked. Now, extend the door to have access to the Mounting Panel. Hold the Mounting Panel edge at the pencil marks at both top and bottom!

**Caution! Take care when attaching the Mounting Panel to the wall. As you unfold the door to insert the screws, the position of the Mounting Panel may move away from your marks. Trust your marks! Sometimes, the marks look "off" when the door is extended.**



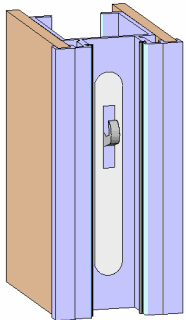
Insert 1 1/2" #6 flat head screws about 8" up from the floor and 8" down from the track.

When the door stacks properly, re-extend it and install 2 more screws between the first 2, about equal distances apart.



**Check it out!** Can you see the pencil marks? If not, the door has shifted. If there is a gap between the edge and your marks, the door has shifted the other way. Stack the door against the Mounting Panel; it should form a neat, tight stack. **DON'T** Force it. If it binds, you missed your marks!

## **4 Interlocking Jamb Molding**

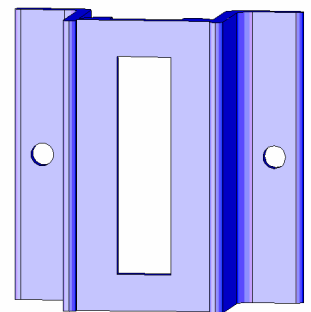


### **Hook style catch**

Dry fit the Interlocking Jamb Molding against the wall, directly under the track. It should fit snugly against the wall and the track at the top.

If it needs to be trimmed, trim it at the bottom. The arrow sticker on the back pointing **up** can easily determine the top.

Attach the interlocking jamb molding with 1 1/2" #6 Flat head screws, through the pre-drilled holes and into the wall behind.



**Thank you for purchasing a Woodfold door.**



**Check it out!** Open and close the door a few times then step back and admire your work.

**Installation is complete!**